

NOTES

1. The boundary lines between different soil strata, as shown on the Soil Boring Records, are approximate and may be gradual.
2. The drillers' field log contains a description of the soil conditions between samples based on the equipment performance and the soil cuttings. The Soil Boring Records contain the description of the soil conditions as interpreted by a geotechnical engineer and/or a geologist after review of the drillers' field logs and soil samples and/or laboratory test results.
3. We define "Caved Level" as the depth below the existing ground surface at a boring location where the soils have collapsed into the borehole following removal of the drilling tools.
4. We define "Water Level" as the depth below the existing ground surface at a boring location to the level of water in the open borehole at the time indicated unless otherwise defined on the Soil Boring Records.
5. We define "at completion" for a boring as being the time when our drilling crew has completed the removal of all drilling tools from the borehole.
6. The Notes and Legend Record and the Soil Boring Records should not be separated.

RELATIVE PERCENTAGE TERMS

no	0%
trace	<5%
few	5 to <10%
little	10 to <30%
some	30 to < 50%

TEST RESULTS LEGEND

q<sub>p</sub> = Penetrometer reading, <sup>ton</sup>/<sub>ft<sup>2</sup></sub>

RELATIVE MOISTURE TERMS AT TIME OF SAMPLING

Frozen or F = Frozen material  
 Dry = Dusty, dry to touch, absence of moisture  
 Moist or M = Damp to touch, no visible water  
 Wet or W = Visible free water

DRILLING METHODS LEGEND

HSA = Continuous flight hollow-stem augers


N-VALUE LEGEND


DS = Drove Stone

REMARKS LEGEND

NR = No Recovery  
 OO = Organic Odor

SAMPLER TYPE LEGEND

 Sample obtained from the auger flights

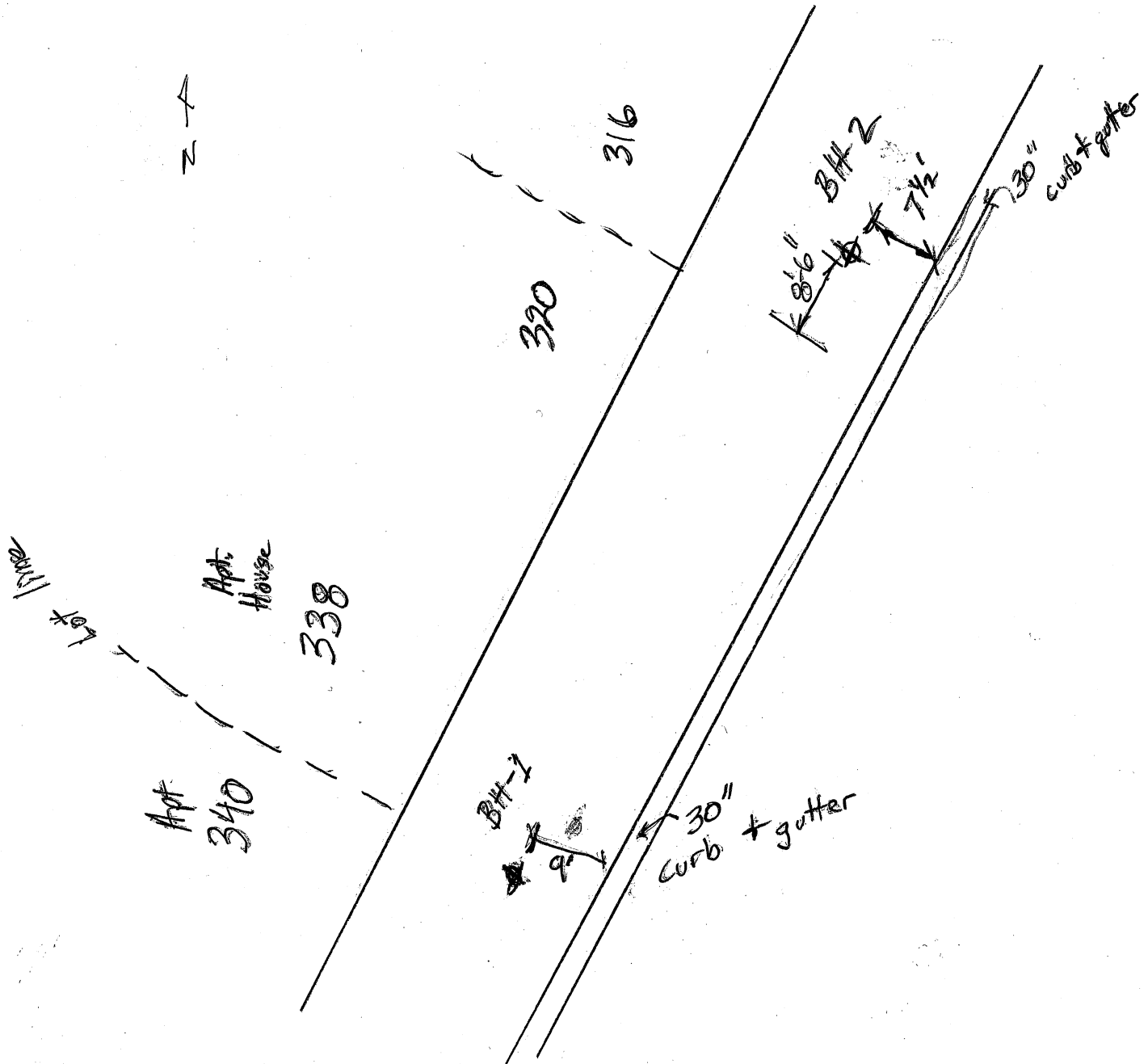
 2-inch-outside-diameter, split-barrel sampler

 **Soils & Engineering Services, Inc.**  
 1102 STEWART STREET • MADISON, WISCONSIN 53713  
 Phone: 608-274-7600 • 888-866-SOIL (7645)  
 Fax: 608-274-7511 • Email: soils@soils.ws  
 CONSULTING CIVIL ENGINEERS SINCE 1966

**NOTES AND LEGEND RECORD**  
 West Wilson Street  
 S Broom Street - S Henry Street  
 City of Madison, Dane County, Wisconsin

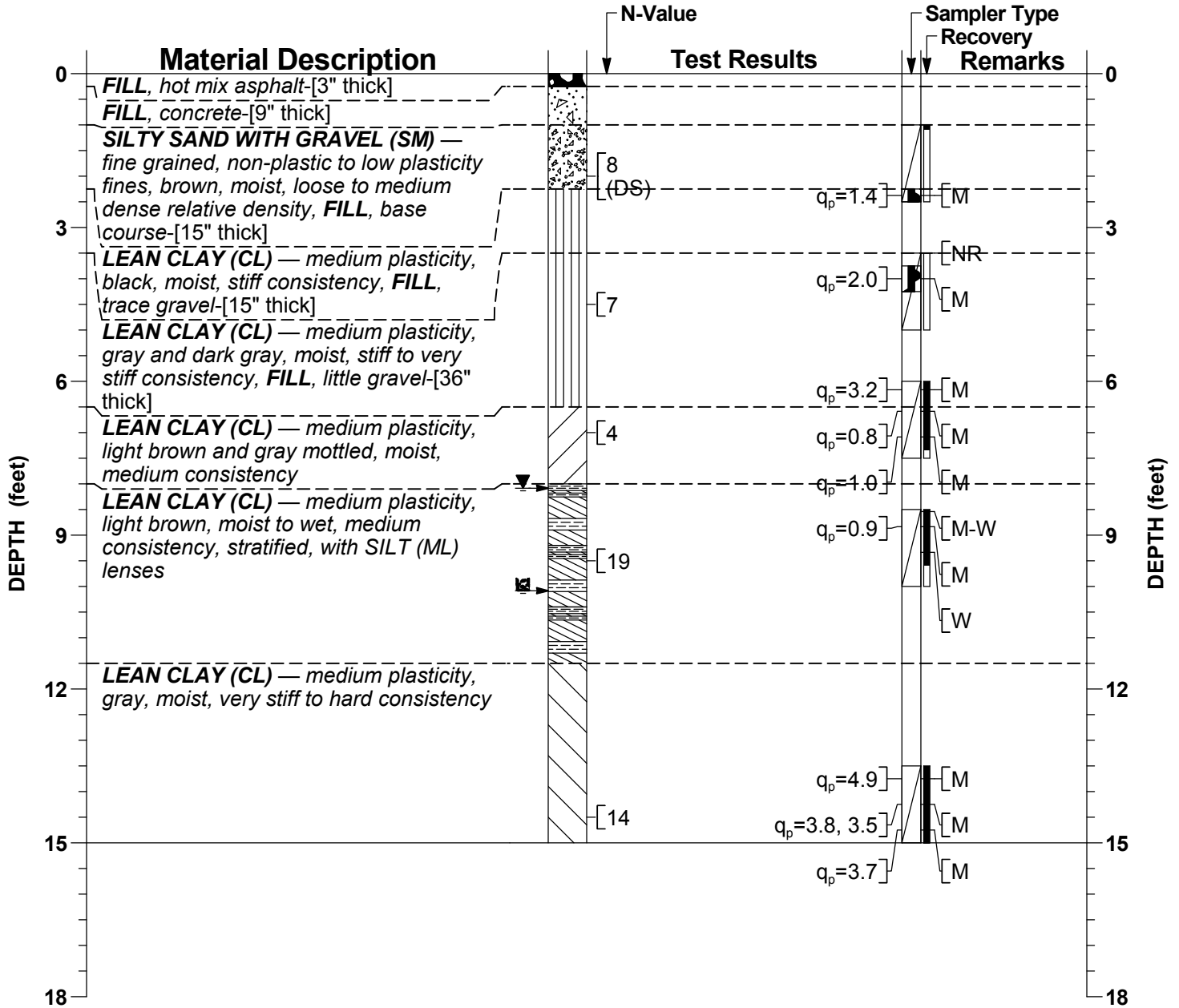
13300.14

N →



West Wilson Street

LATITUDE: —	LONGITUDE: —	COUNTY: <b>Dane</b>	SECTION: <b>23</b>	CREW CHIEF: <b>SWK</b>	DRILL RIG: <b>CME 75</b>	PAGE: <b>1 of 1</b>
NORTHING: —	EASTING: —	TOWNSHIP: <b>(Madison) 7 N</b>	¼: <b>NE</b>	LOG REVIEW: <b>CMB</b>	HAMMER TYPE: <b>Automatic</b>	TOTAL DEPTH: <b>15'-0"</b>
STATION: —	OFFSET: —	RANGE: <b>9 E</b>	¼ ¼: <b>SE</b>	LOG QC: <b>CMB</b>	DATE STARTED: <b>12/28/2018</b>	DATE COMPLETED: <b>12/28/2018</b>



WATER LEVEL LEGEND	OTHER LEVEL LEGEND
▼ 8'-1" at completion	█ 10'-1" Caved at completion

DRILL METHOD	TOOL SIZE	CASING SIZE	DRILL FLUID	DEPTH FROM	DEPTH TO	HOLE DIA
HSA	2 1/4"	—	None	0'-0"	15'-0"	5.6"

SAMPLING METHOD(S): AASHTO T 206  
 SURFACE PATCH: Cold Mix Asphalt Patching Compound  
 BACKFILL: base course, Bentonite Chips, Caved Soil

The Notes and Legend Record is considered a part of this Soil Boring Record.

**Soils & Engineering Services, Inc.**  
 1102 STEWART STREET • MADISON, WISCONSIN 53713  
 Phone: 608-274-7600 • 888-866-SOIL (7645)  
 Fax: 608-274-7511 • Email: soils@soils.ws  
 CONSULTING CIVIL ENGINEERS SINCE 1966

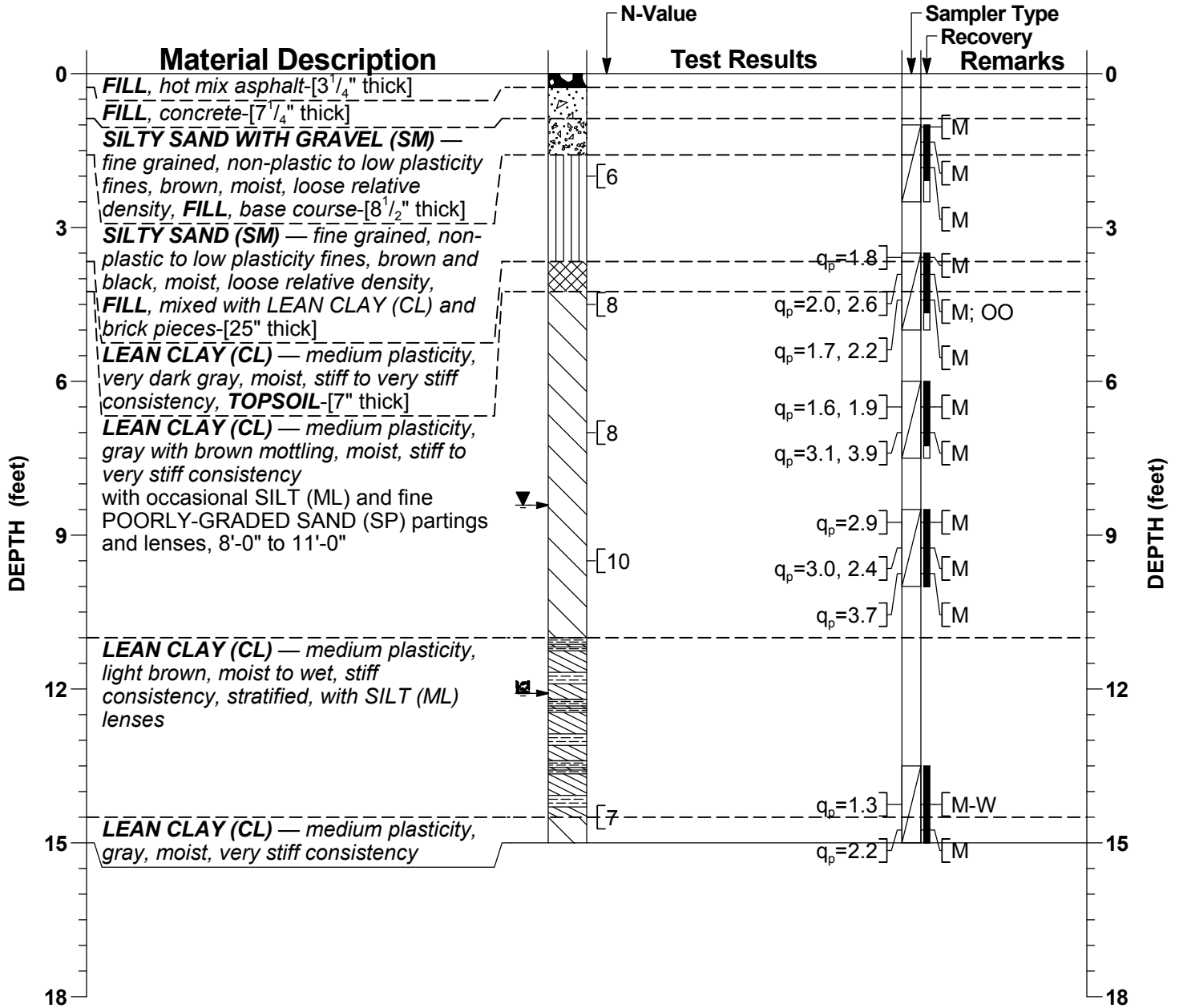
**SOIL BORING RECORD**  
 West Wilson Street  
 S Broom Street - S Henry Street  
 City of Madison, Dane County, Wisconsin

13300.14

General Location: **7.5' northwest of southeast pavement edge, 8.5' northeast of lot line b/w 316 & 320 W Wilson Street**

**Boring BH-2**

LATITUDE: —	LONGITUDE: —	COUNTY: <b>Dane</b>	SECTION: <b>23</b>	CREW CHIEF: <b>SWK</b>	DRILL RIG: <b>CME 75</b>	PAGE: <b>1 of 1</b>
NORTHING: —	EASTING: —	TOWNSHIP: <b>(Madison) 7 N</b>	¼: <b>NE</b>	LOG REVIEW: <b>CMB</b>	HAMMER TYPE: <b>Automatic</b>	TOTAL DEPTH: <b>15'-0"</b>
STATION: —	OFFSET: —	RANGE: <b>9 E</b>	¼ ¼: <b>SE</b>	LOG QC: <b>CMB</b>	DATE STARTED: <b>12/28/2018</b>	DATE COMPLETED: <b>12/28/2018</b>



WATER LEVEL LEGEND	OTHER LEVEL LEGEND
▼ 8'-5" at completion	█ 12'-1" Caved at completion

DRILL METHOD	TOOL SIZE	CASING SIZE	DRILL FLUID	DEPTH FROM	DEPTH TO	HOLE DIA
HSA	2 1/4"	—	None	0'-0"	15'-0"	5.6"

SAMPLING METHOD(S): AASHTO T 206

SURFACE PATCH: Cold Mix Asphalt Patching Compound

BACKFILL: Auger Cuttings, Bentonite Chips, Caved Soil

The Notes and Legend Record is considered a part of this Soil Boring Record.

**Soils & Engineering Services, Inc.**  
 1102 STEWART STREET • MADISON, WISCONSIN 53713  
 Phone: 608-274-7600 • 888-866-SOIL (7645)  
 Fax: 608-274-7511 • Email: soils@soils.ws  
 CONSULTING CIVIL ENGINEERS SINCE 1966

**SOIL BORING RECORD**  
 West Wilson Street  
 S Broom Street - S Henry Street  
 City of Madison, Dane County, Wisconsin

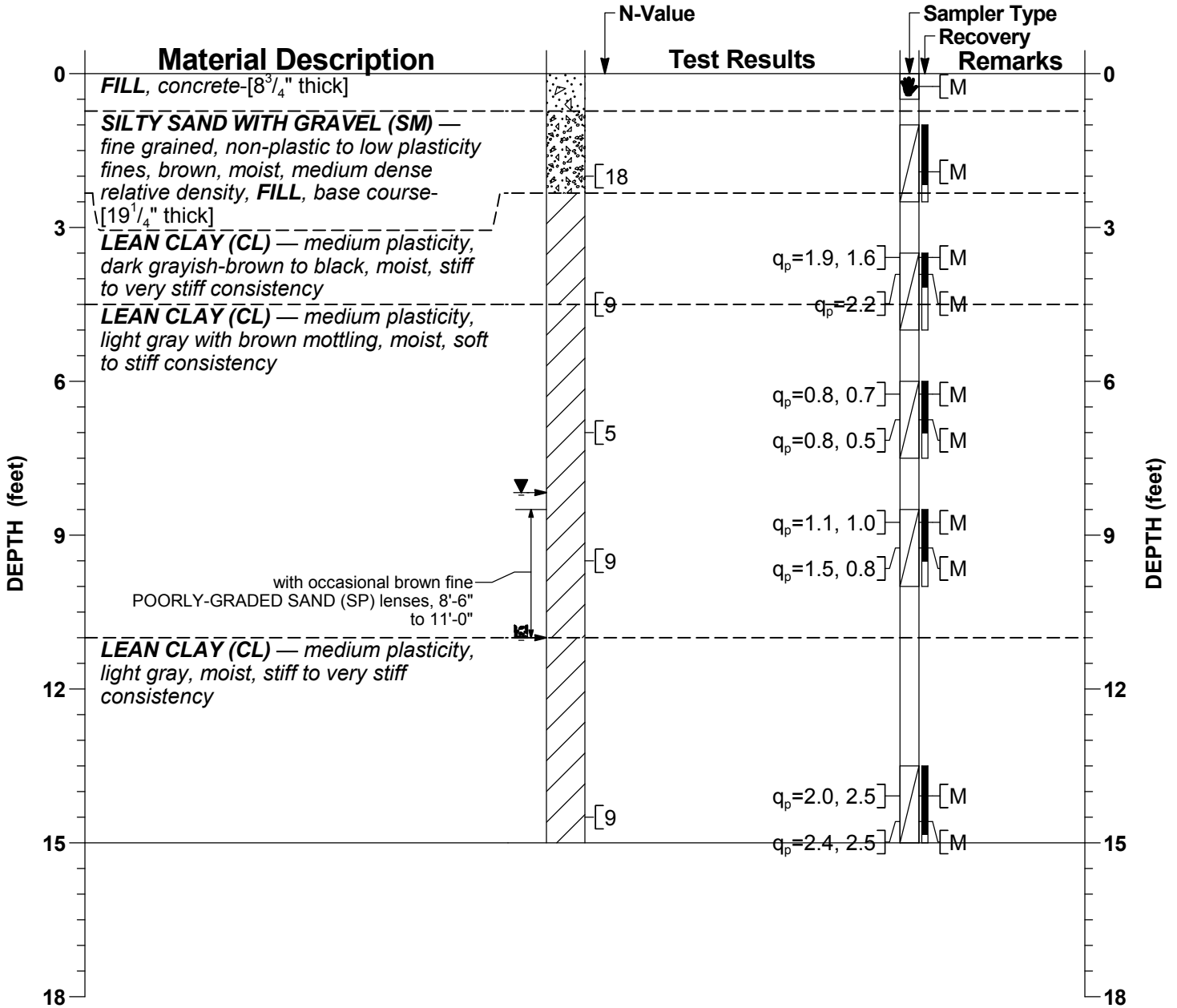
13300.14

General Location:

Assuming S Broom Street is in east-west direction, this boring is 22 feet west of Lots 207/209 property line, 8.5 feet south of back of north curb

**Boring BH-3**

LATITUDE: —	LONGITUDE: —	COUNTY: <b>Dane</b>	SECTION: <b>23</b>	CREW CHIEF: <b>SJH</b>	DRILL RIG: <b>CME 75</b>	PAGE: <b>1 of 1</b>
NORTHING: —	EASTING: —	TOWNSHIP: <b>(Madison) 7 N</b>	¼: <b>NE</b>	LOG REVIEW: <b>SLF</b>	HAMMER TYPE (EFFICIENCY): <b>Automatic (91%)</b>	TOTAL DEPTH: <b>15'-0"</b>
STATION: —	OFFSET: —	RANGE: <b>9 E</b>	¼ ¼: <b>SE</b>	LOG QC: <b>CMB</b>	DATE STARTED: <b>01/02/2020</b>	DATE COMPLETED: <b>01/02/2020</b>



WATER LEVEL LEGEND	OTHER LEVEL LEGEND
▼ 8'-2" at completion	⊠ 11'-0" Caved at completion

DRILL METHOD	TOOL SIZE	CASING SIZE	DRILL FLUID	DEPTH FROM	DEPTH TO	HOLE DIA
HSA	2 1/4"	—	None	0'-0"	15'-0"	6.3"

SAMPLING METHOD(S): AASHTO T 206

SURFACE PATCH: Portland Cement (Sacrete) Patching Compound

BACKFILL: Base Course, Bentonite Chips, Caved Soil

The Notes and Legend Record is considered a part of this Boring Log Record.

**Soils & Engineering Services, Inc.**  
 1102 STEWART STREET • MADISON, WISCONSIN 53713  
 Phone: 608-274-7600 • 888-866-SOIL (7645)  
 Fax: 608-274-7511 • Email: soils@soils.ws  
 CONSULTING CIVIL ENGINEERS SINCE 1966

**BORING LOG RECORD**  
 S. Broom St.  
 City of Madison, Dane County, Wisconsin

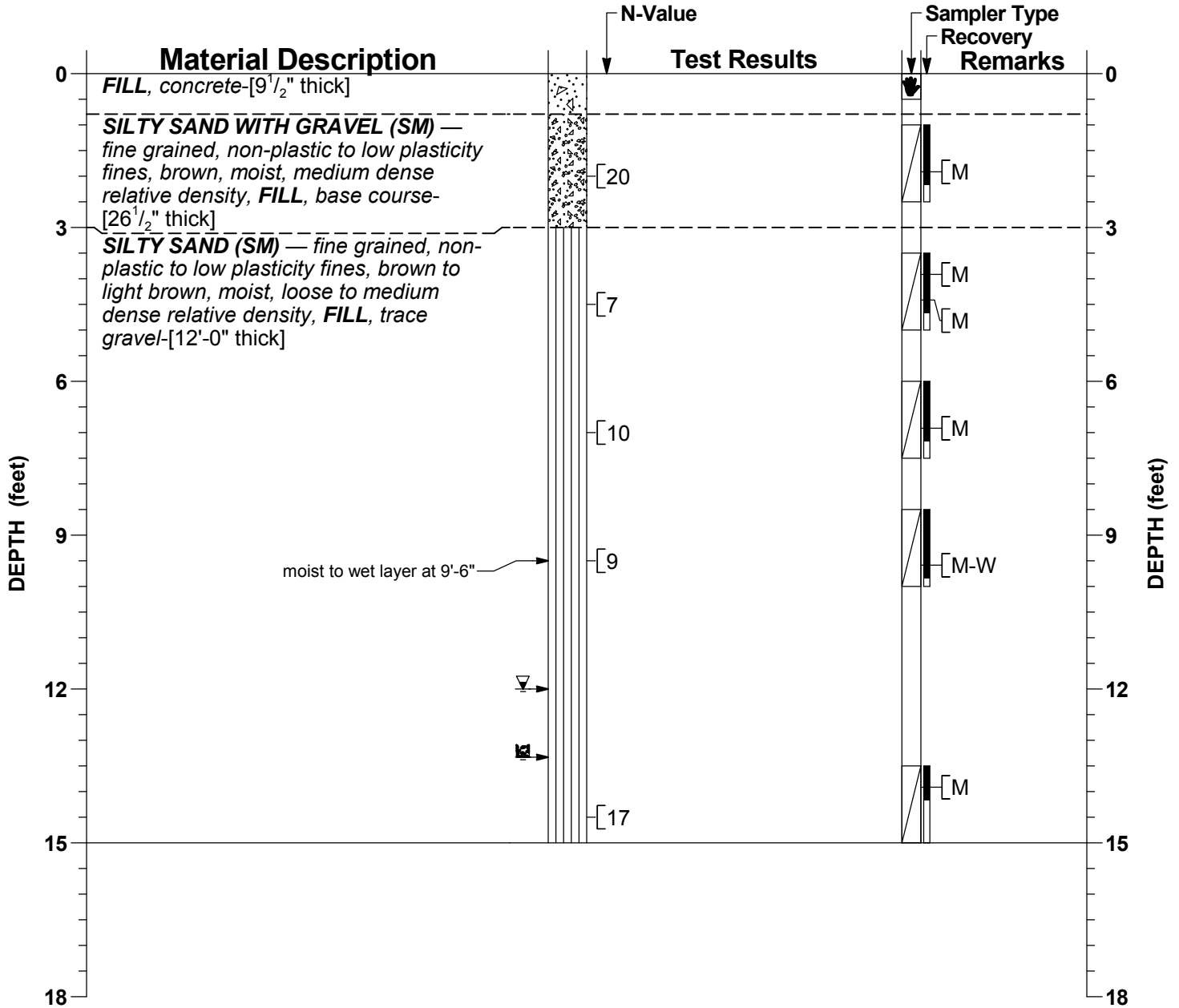
13300.35

General Location:

Assuming S Broom Street is in east-west direction, this boring is 29 feet east of Lots 310/314 property line, 7 feet south of back of north curb

**Boring BH-4**

LATITUDE: —	LONGITUDE: —	COUNTY: <b>Dane</b>	SECTION: <b>23</b>	CREW CHIEF: <b>SJH</b>	DRILL RIG: <b>CME 75</b>	PAGE: <b>1 of 1</b>
NORTHING: —	EASTING: —	TOWNSHIP: <b>(Madison) 7 N</b>	¼: <b>NE</b>	LOG REVIEW: <b>SLF</b>	HAMMER TYPE (EFFICIENCY): <b>Automatic (91%)</b>	TOTAL DEPTH: <b>15'-0"</b>
STATION: —	OFFSET: —	RANGE: <b>9 E</b>	¼ ¼: <b>SE</b>	LOG QC: <b>CMB</b>	DATE STARTED: <b>01/02/2020</b>	DATE COMPLETED: <b>01/02/2020</b>



WATER LEVEL LEGEND	OTHER LEVEL LEGEND
▽ 12'-0" at completion	■ 13'-4" Caved at completion

DRILL METHOD	TOOL SIZE	CASING SIZE	DRILL FLUID	DEPTH FROM	DEPTH TO	HOLE DIA
HSA	2 1/4"	—	None	0'-0"	15'-0"	6.3"

SAMPLING METHOD(S): AASHTO T 206  
 SURFACE PATCH: Portland Cement (Sacrete) Patching Compound  
 BACKFILL: Base Course, Auger Cuttings, Bentonite Chips, Caved Soil

The Notes and Legend Record is considered a part of this Boring Log Record.

**Soils & Engineering Services, Inc.**  
 1102 STEWART STREET • MADISON, WISCONSIN 53713  
 Phone: 608-274-7600 • 888-866-SOIL (7645)  
 Fax: 608-274-7511 • Email: soils@soils.ws  
 CONSULTING CIVIL ENGINEERS SINCE 1966

**BORING LOG RECORD**  
 S. Broom St.  
 City of Madison, Dane County, Wisconsin

13300.35